

MY KIT FIRST AID & CARE

...A SAFER LIFE



FIRST
AID
KIT

RFX+CARE





WELCOME TO THE WORLD OF MY KIT™

ADVERTISING WITH FIRST AID KIT & PERSONAL CARE PRODUCTS.

THE MY KIT RANGE IS PRODUCED TO THE HIGHEST STANDARDS FROM RAW MATERIALS TO FINISHED PRODUCTS.

ALL FIRST AID PRODUCTS ARE MANUFACTURED AND PACKED IN FULL COMPLIANCE WITH THE CE REGULATIONS AT OUR OWN FACTORY. WE COMPLY WITH ISO 13485:2003

FOR THE QUALITY OF PERSONAL COSMETIC PRODUCTS. THESE ARE CARRIED OUT EXCLUSIVELY IN EU IN ACCORDANCE WITH GMP. PRODUCTION WORKS IN ACCORDANCE TO THE EU'S COMMON STANDARDS AND IS REGULARLY CHECKED BY THE RELEVANT AUTHORITIES.

PROMOTIONAL LABELS FOR US MEANS SERVING OUR CUSTOMERS WITH THE COMPLETE BRAND CONCEPT FROM DESIGN, LOGOS, STRATEGY TO TIMELINE AND LOGISTIC.

HAVE A SAFE PROMOTION!

A handwritten signature in black ink, appearing to read 'E. Ozyürek', is positioned on the left side of the page.



CONTENTS

TRAVEL PLUS	6
TRAVEL	7
HOTEL HIS	8
HOTEL HERS	9
BURNS & SCALDS	10
BITES & STINGS	11
WALKING	12
MARATHON	13
FIRE	14
SUNBURN	15
TICK SET	16
PETS	17
GOLF	18
SPORT	19



BIKE	20
SKIING	21
PLASTERS	22
ANTI BACTERIA	23
CAR	24
OFFICE	25
TOOL	26
FEET & HANDS	27
RELAXATION	28
ON BOARD	29
KIDS	30
FESTIVAL	31
PROMOTION	32
PLASTERS	36

TRAVEL PLUS

TRAVEL PLUS

- 12 WASHPROOF PLASTERS
- 1 BLISTER PLASTER
- 2 BURN WOUND LINT PADS
- 4 WASH SWABS
- 2 DRY SWABS
- 2 REFRESHING WIPES
- 1 ALOE VERA CREAM

ART. NO. 200-123



TRAVEL



TRAVEL

- 12 WASHPROOF PLASTERS
- 4 WASH SWABS
- 2 DRY SWABS
- 2 BURN WOUND LINT PADS

ART. NO. 200-112



HOTEL HIS

HOTEL HIS

- 1 RAZOR
- 1 SHAVING CREAM
- 1 AFTER SHAVE BALM
- 1 TOOTHBRUSH
- 1 TOOTHPASTE
- 1 SHAMPOO
- 1 BALSAM
- 2 REFRESHING WIPES
- 1 FOOT CREAM

ART. NO. 200-113



HOTEL HERS

HOTEL HERS

- 1 RAZOR
- 1 SHAVING CREAM
- 1 TOOTHBRUSH
- 1 TOOTHPASTE
- 1 ALOE VERA CREAM
- 1 SHAMPOO
- 1 BALSAM
- 2 REFRESHING WIPES
- 1 FOOT CREAM

ART. NO. 200-114



BURNS & SCALDS

BURNS & SCALDS

- 12 WASH PROOF PLASTERS
- 4 WASH SWABS
- 2 DRY SWABS
- 2 BURN WOUND LINT PADS
- 2 BURN GEL

ART. NO. 200-103



BITES & STINGS



BITES & STINGS

- 12 WASH PROOF PLASTERS
- 4 WASH SWABS
- 2 DRY SWABS
- 2 BURN WOUND LINT PADS
- 2 INSECT REPELLENT WIPES
- 1 ALOE VERA CREAM

ART. NO. 200-110



WALKING



WALKING

- 6 WASH PROOF PLASTERS
- 4 WASH SWABS
- 2 DRY SWABS
- 2 REFRESHING WIPES
- 2 BLISTER PLASTERS
- 2 FOOT CREAM
- 1 TWEEZERS

ART. NO. 200-108



MARATHON



MARATHON

- 1 REFLEX BAND JB380
- 2 REFRESHING WIPES
- 2 BLISTER PLASTERS
- 1 ELASTIC SPORT BANDAGE
- 2 FOOT CREAM

ART. NO. 200-107



FIRE



FIRE

- 1 FACE MASK
- 2 BURN GEL
- 2 BURN WOUND LINT PADS
- 2 REFRESHING WIPES
- 2 WASH SWABS
- 6 WASH PROOF PLASTERS

ART. NO. 200-102



SUNBURN



SUNBURN

- 2 SUN CREAM 30
- 2 BURN GEL
- 2 BURN WOUND LINT PADS
- 1 LIPBALM
- 2 REFRESHING WIPES

ART. NO. 200-101



TICK SET



TICK SET

- 4 WASH PROOF PLASTERS
- 4 WASH SWABS
- 1 TICK REMOVER BLUE (HUMAN)
- 1 TICK REMOVER RED (ANIMAL)
- 4 KID PLASTER ZOE/JOE
- 1 REFRESHING WIPE

ART. NO. 200-124



PETS



PETS

- 1 TICK REMOVER
- 1 BANDAGE
- 2 TAPE
- 4 WASH SWABS
- 2 DRY SWABS
- 1 TWEEZERS
- 6 WASH PROOF PLASTERS

ART. NO. 200-105



GOLF



GOLF

- 12 WASH PROOF PLASTERS
- 2 REFRESHING WIPES
- 1 INSECT REPELLENT WIPE
- 2 BLISTER PLASTERS
- 1 SUNCREAM 30

ART. NO. 200-117



SPORT



SPORT

- 2 ICE POWER GEL
- 2 BLISTER PLASTERS
- 1 ELASTIC SPORT BANDAGE
- 6 WASH PROOF PLASTERS
- 4 WASH SWABS
- 2 DRY SWABS

ART. NO. 200-115



BIKE



BIKE

- 1 REFLEX BAND JB380
- 12 WASH PROOF PLASTERS
- 4 WASH SWABS
- 2 DRY SWABS
- 1 BLISTER PLASTER
- 2 REFRESHING WIPES

ART. NO. 200-118



SKIING



SKIING

- 1 ICE POWER GEL
- 2 BLISTER PLASTERS
- 1 ELASTIC SPORT BANDAGE
- 1 LIPBALM
- 1 SUNCREAM
- 6 WASH PROOF PLASTERS

ART. NO. 200-116



PLASTERS



PLASTERS

- 25 WASH PROOF PLASTERS
- 10 WASH SWABS
- 3 DRY SWABS

ART. NO. 200-121



ANTI BACTERIA

ANTI BACTERIA

- 4 DISINFECTION WIPES
- 1 FACE MASK
- 1 PAIR OF GLOVES
- 2 REFRESHING WIPES

ART. NO. 200-129



CAR



CAR

- 12 WASH PROOF PLASTERS
- 2 WASH SWABS
- 2 DRY SWABS
- 1 INTERIOR & GLAS WIPES
2 PACK
- 1 REFRESHING WIPES
- 1 GLOVES
- 1 MINI SCISSORS

ART. NO. 200-122



OFFICE



OFFICE

- 12 WASH PROOF PLASTERS
- 4 WASH SWABS
- 2 DRY SWABS
- 2 BURN WOUND LINT PADS
- 1 BURN GEL

ART. NO. 200-106



TOOL



TOOL

- 1 DUST MASK
- 12 WASH PROOF PLASTERS
- 2 BURN WOUND LINT PADS
- 4 WASH SWABS
- 2 DRY SWABS
- 1 BLISTER PLASTERS
- 2 REFRESHING WIPES
- 1 TWEEZERS

ART. NO. 200-104



FEET & HANDS



FEET & HANDS

- 2 ALOE VERA CREAM
- 2 FOOT CREAM
- 2 BLISTER PLASTERS
- 1 MINI SCISSORS
- 12 WASH PROOF PLASTERS
- 4 WASH SWABS
- 2 DRY SWABS
- 1 BURN WOUND LINT PAD
- 1 TWEEZERS

ART. NO. 200-128



RELAXATION



RELAXATION

- 2 ALOE VERA CREAM
- 2 FOOT CREAM
- 2 EARPLUGS
- 1 EYE SHADES

ART. NO. 200-127



ON BOARD

ON BOARD

- 1 EYE SHADES
- 2 EARPLUGS
- 1 TOOTHBRUSH
- 1 TOOTHPASTE
- 2 REFRESHING WIPES

ART. NO. 200-111



KIDS



KIDS

- 12 ZOE&JOE PLASTERS
- 4 WASH SWABS
- 2 DRY SWABS
- 2 REFRESHING WIPES
- 1 REFLEX STICKER

ART. NO. 200-119



FESTIVAL



FESTIVAL

- 12 WASH PROOF PLASTERS
- 4 WASH SWABS
- 2 DRY SWABS
- 2 REFRESHING WIPES
- 2 CONDOMS
- 1 BLISTER PLASTER
- 1 ALOE VERA

ART. NO. 200-120



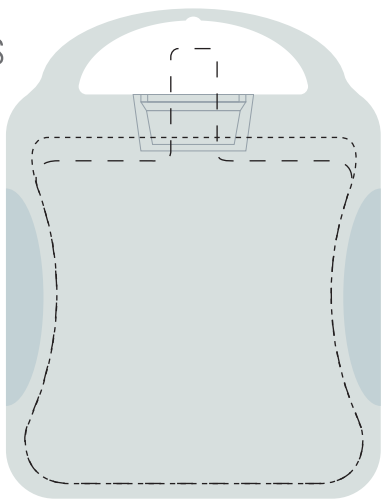
MY KIT PROMOTION

BOX MEASUREMENTS

WIDTH 100 MM
HEIGHT 138 MM
DEPTH 30 MM

LABEL FRONT
90 X 85 MM

LABEL BACK
90 X 90 MM



COLOUR RANGE



00

11

08

07

05

03

PANTONE

WE ALSO OFFER BESPOKE COLOURS ON REQUEST.

PROMOTION OPTION

PRINT ON LABEL
PART PRINT OR
FULL PRINT

LABEL FRONT
90 X 85 MM

LABEL BACK
90 X 90 MM



PART PRINT



**FULL
LABEL
DESIGN**

FULL PRINT
90 X 85 MM

LABEL FRONT

**FULL
LABEL
DESIGN**

FULL PRINT
90 X 90 MM

LABEL BACK

PLASTER CASE

CASE
5 OR 10 PLASTERS

PRINTABLE AREA
1-4 COLOURS
94 X 100 MM



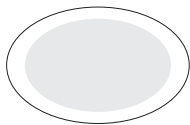
BLISTER PLASTER

CASE
1-5 BLISTER
PLASTERS

PRINTABLE AREA
1-4 COLOURS
94 X 100 MM



BLISTER PLASTER
69 X 44 MM
ART. NO. 45182



PLASTER DISPENSER

DISPENSER 38 X 90 MM
FOR 5 OR 10 PLASTERS

PRINTABLE LABEL
1-4 COLOUR
PRINT AREA 90 X 60 MM



COLOUR RANGE



PLASTER

PLAIN PLASTER

72 X 19 MM ART.NO. 45126



PRE-PRINTED PLASTER ZOE & JOE

72 X 19 MM ART.NO. 45119



CUSTOMIZED PLASTER

72 X 19 MM ART.NO. 45209
MINIMUM 30.000 PCS

FULL PRINT
1-4 COLOURS



DISTRIBUTOR

A large rectangular area defined by a dashed black border, intended for a distributor's name or contact information.

